

The ProblemSolver for SheetMetal, Forming and Tools



ITE can build and run tools for materials between 0,1mm to 12mm thickness from coil and sheets, in various metallic materials. ITE can offer Robot- and manual Nutwelding and/or assembly operations.



ITE Fabriks core competence: Stamping, Welding, and Assembly of metal parts. Innovation, Design and Manufacturing of Stamping tools up to 3m x 2m x 1m, Max 15 Ton tool weight.

ITE can build and run tools for materials between 0,1mm to 12mm thickness from coil and sheets, in various metallic materials. ITE can offer Robot- and manual Nutwelding and/or assembly operations.

ITE have Mechanical stamping presses up to 800 ton for automatic stamping in progressive tools and Hydraulic presses up to 750 ton for drawdies etc.

Quality Systems: ISO TS 16 949 and ISO 9001

References: Volvo Trucks, Scania, Mercedes, Lindab, Volvo Cars, Ferrari, Audi R8, Jaguar etc.

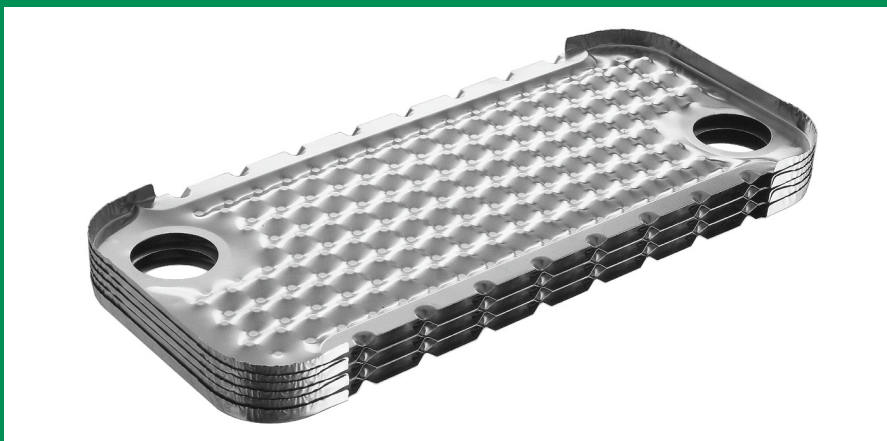
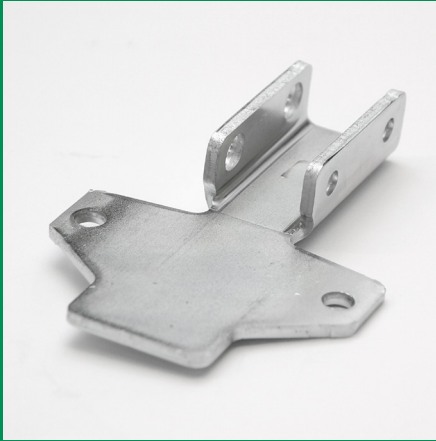
Östra Ringvägen 181, SE 293 40 Olofström, Sweden
Phone: +46 454 990 90, Fax +46 454 922 64
www.itefabriks.se, E-mail: ite@itefabriks.se

ITE
ITE Fabriks AB



www.itefabriks.se

The ProblemSolver for SheetMetal, Forming and Tools



In the end it is all about quality